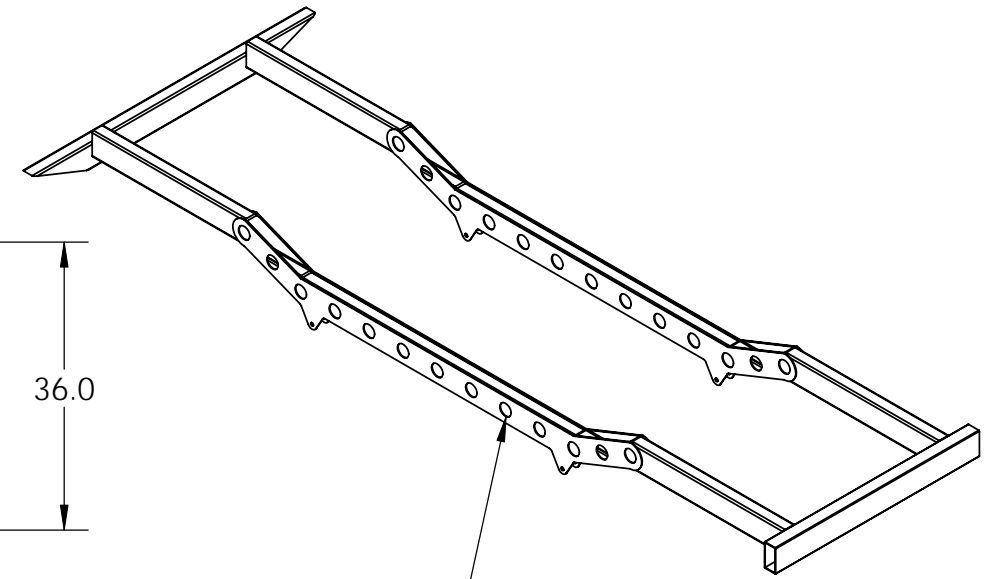
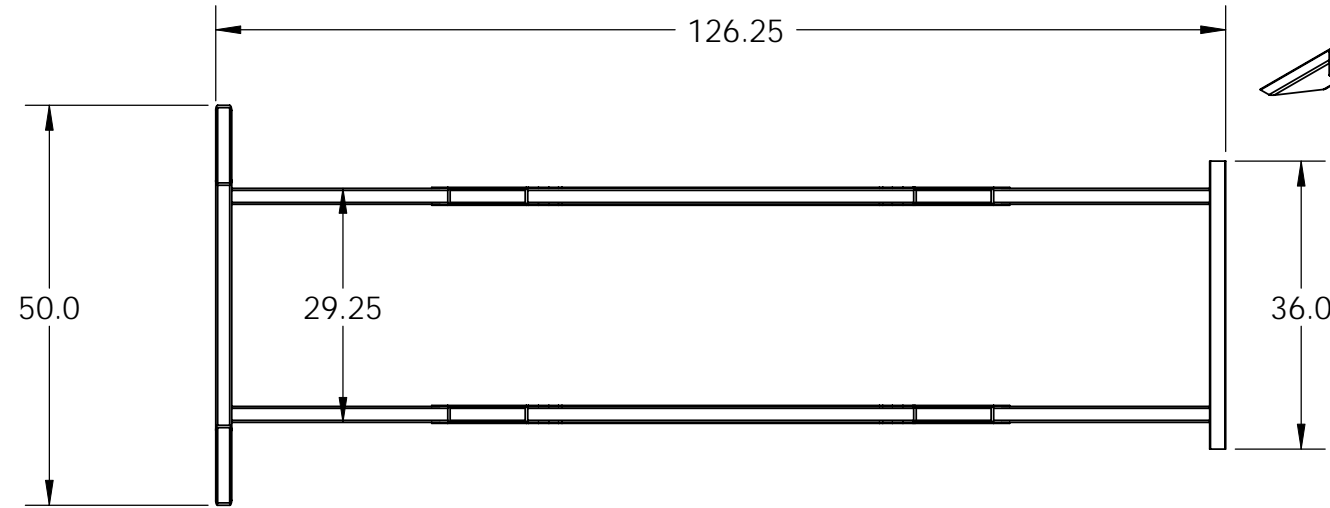
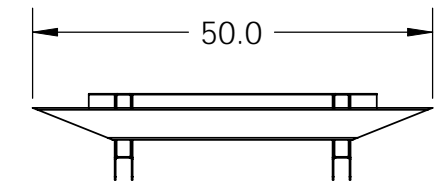
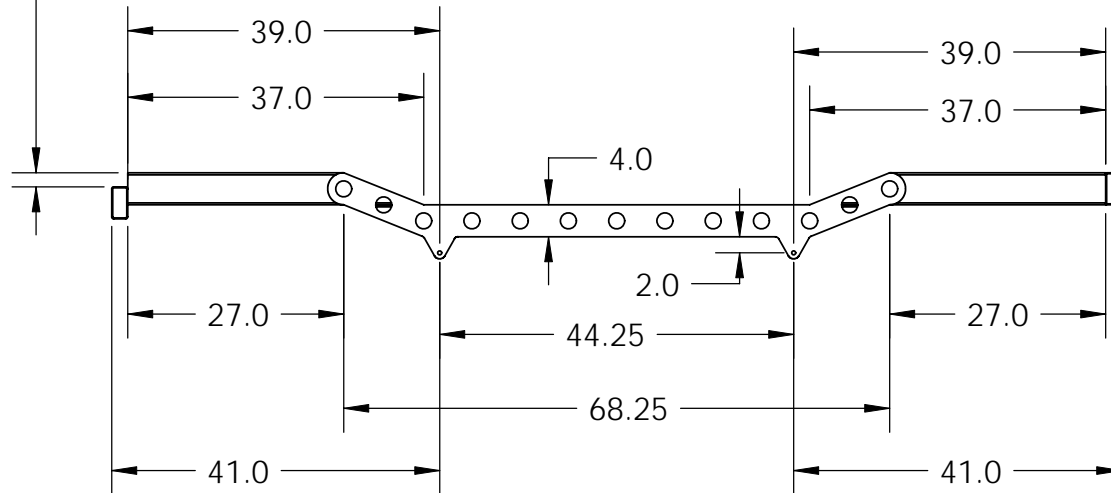
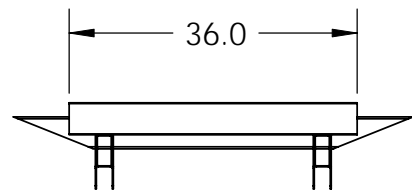


Material: The frame is designed to be constructed using 2"x4" mild steel box tubing with a 1/8" wall thickness.



4-1/8" thick cnc cut side plates
-See DXF cut file.

1.75
Rear
Crossmember
Drop



Notes:

-Frame is designed to use 'rear' 1.75" wide CJ2A/CJ3A leaf springs at all 4 locations with a 2" wide bushing assembly.

-Frame is designed for an 85-86" wheelbase depending on which stock or aftermarket spring height is used. +2-3" rear wheelbase, +3-4" front wheelbase.

-Frame is designed to have the body set flush to the rear crossmember/bumper. If the bumper is to extend beyond the rear plane of the tub the frame will need to be adjusted.

-Shown is only the 'basic' frame structure. It is best to set the tub into position and build the body mounts to the tub that is use. The Willys MB, CJ2A, CJ3A, M38, and Ford GPW all have different body mount locations.

-Additional crossmembers should be added for frame support. The factory frame included a crossmember under the grill, transmission, tub floor step, rear floor, and K-member.

The only right I reserve is to manufacture for public sale. The design free to use, but NOT for sale in any capacity.

	NAME	DATE	Metal Dreams		
DRAWN	BM	2010			
CHECKED			TITLE: Willys Flat Fender Frame		
ENG APPR.					
MFG APPR.					
Q.A.					
COMMENTS:			SIZE	DWG. NO.	REV
			B	Flat Fender Frame	
			WEIGHT:	SHEET 1 OF 1	